

SPLITS SYSTEM

Devices to perfectly fit
all cellar architectures

THE WINE PRESERVATION

Whether ready to drink, for an average cellaring of 5 to 10 years, a long cellaring of 10 to 20 years or a very long cellaring of more than 20 years, **the wine requires the greatest of attention for an optimal expression of the aromas.** Regardless of the vintage or the labels, **each bottle represents a heritage and know-how to protect.**

Wines from organic farming or natural aging without sulphites are **even more sensitive** to the slightest change in the storage atmosphere.

Friax air conditioners adapt the cellar to the specific conditions required for the protection and consumption of wines.



The **ideal temperature** for storing a wine is between 12 and 15 ° C. It is the sudden changes in temperature that pose **a risk to the aging** of bottles.

This is why Friax offers **a product finish incorporating heating** to smooth the temperature curves between summer and winter.



The humidity should be adjusted between **65 and 75%**.

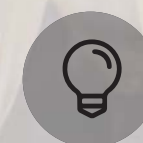
An **atmosphere that is too dry** can cause the contents of the bottles to flow, letting air in and causing the wine to become maderized.

An **atmosphere that is too humid** takes off and degrades the labels.



The **vibrations** harm the wine. Our solutions are designed to be discreet and not to damage the bottles.

Friax air conditioners include a **double barrier of shock absorbers** on the compressors **as well as absorbent tubes.**



Wines **fears the light.** It is best to use lighting solutions outside the UV spectrum so as **not to damage the aromas.**

Neon lights are to be avoided, and LEDs must be selected carefully.

The Friax splits system consist of:

- A condensing unit, the design and dimensions of which may vary depending on the powers and the chosen condensing mode (air or water).
- One or more evaporators adapted to each location geometry.
- An integrated regulation depending on the model selected.
- A wireless remote control.



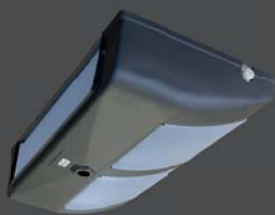
Condensing units p 30

Different characteristics depending on the model.



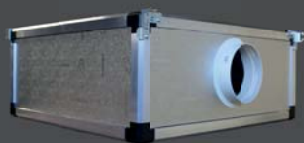
Wall mounted EVX p 34

The EVX wall mounted split system fits easily into your cellar decor.



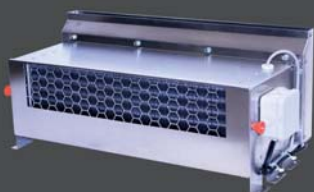
Ceiling mounted EVPL p 38

The EVPL ceiling mounted split system covers a wide range of use with 2 finishes and 6 available sizes.



Ductable EVG / EVI p 42

The configuration of the EVG / EVI splits system allows them to be completely hidden from view so that only the bottles are visible.



Cabinet EVA p 46

The EVA split system let you express your creativity by easily integrating into any custom cabinet you could imagine.

Condensing Units

The condensing units of the Friax splits system are available in 3 different versions depending on the size and use.

- **GCG** units for air-cooled splits from size 30 to 48.
Possibility of ducted group with the **KFG-GCG** kit.
- **GC** units for air-cooled splits from size 82 to 230.
- **W** units for water-cooled splits from size 30 to 230.

Air-cooled condensing units GCG 30 to 48

The **GCG** units of splits 30 to 48 consist of a micro-channel coil, an electronically commutated centrifugal ventilation (EC) controlled by a **KPC** condensing pressure regulation allowing to optimize the operation of the refrigeration system in summer and winter.

The units are equipped with a tank and liquid line with dehydrator and sight glass. Flare valves with schraeder are provided for connection and commissioning. The units are preloaded with fluid.

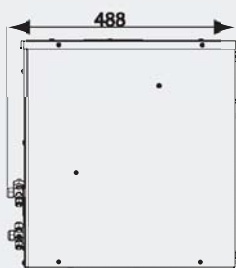
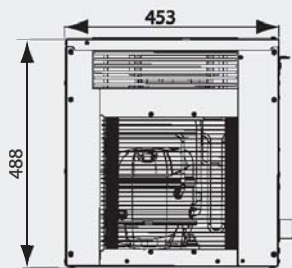
The compressor is fitted with an **RC** regulated crankcase heater to ensure its protection when the split is working in heating mode. The connection is made on a waterproof electrical box.

The wall bracket and anti-vibration mounts are included.



GCG unit + KFG-GCG kit

SPC 30 and 48



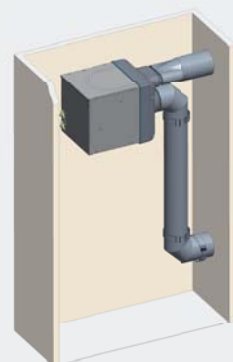
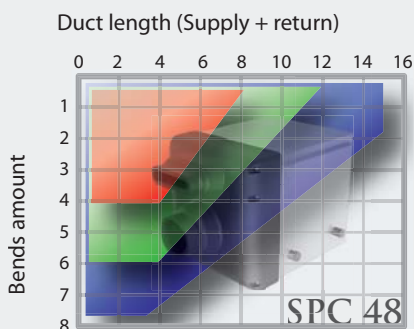
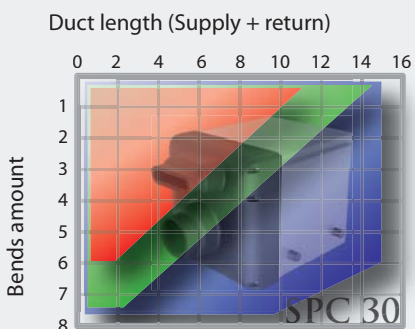
KFG-GCG

Friax units are delivered with anti-vibration mounts and a support for installation on a wall or partition.

A Low Sound Level **BNS** Kit can be supplied to reduce the sound level of the unit. For installations inside a technical room, size groups 30 and 48 can be sheathed with the **KFG-GCG** front kit and some accessories (see splits price list).

Duct selection tables for use with the KFG-GCG kit

Select the type of duct to be used for ducting SPC 30 and 48 units. The color at the point of intersection between the number of bends and the total length of the ducting determines the type of duct to be used.



Ø160 glass wool insulated flexible duct(KGS160)

Ø160 Semi-rigid polyethylene duct (KGR160)

Ø200 glass wool insulated flexible duct (KGS200) or Ø180 Semi-rigid polyethylene duct (KGR180)

Technical characteristics

GCG 30-48 units	SPC	30	48
Cooling capacity	W	780	1100
Voltage	50Hz	230 V/1+T	230 V/1+T
Intensity absorbed	A	3.3	4.2
Air flow	m3/h	225	335
Sound pressure level at 5m without BNS	db	40	44
Sound pressure level at 5m with BNS	db	37	41
Suction gas connection (Flare)	Φ	3/8"	3/8"
Liquid gas connection (Flare)	Φ	1/4"	1/4"
Net weight	Kg	36	38
Body color		RAL7035	RAL7035
Refrigerant		R134A	R134A
Pre-loaded for	m	6	6

Air-cooled condensing units GC 82 to 230



The size 82 to 230 air-cooled splits are equipped with GC units. The GC units consist of a galvanized frame and a body coated with light gray EPOXY paint (RAL7035) intended for outdoor installation.

They are equipped with a tank, a liquid line with dehydrator and sight glass. Flare valves are provided for the refrigeration connection.

The safety of the unit is ensured by high and low pressure cartridge pressure switches. A **KPC** condensing pressure control system allows the refrigeration system to operate properly in summer and winter.

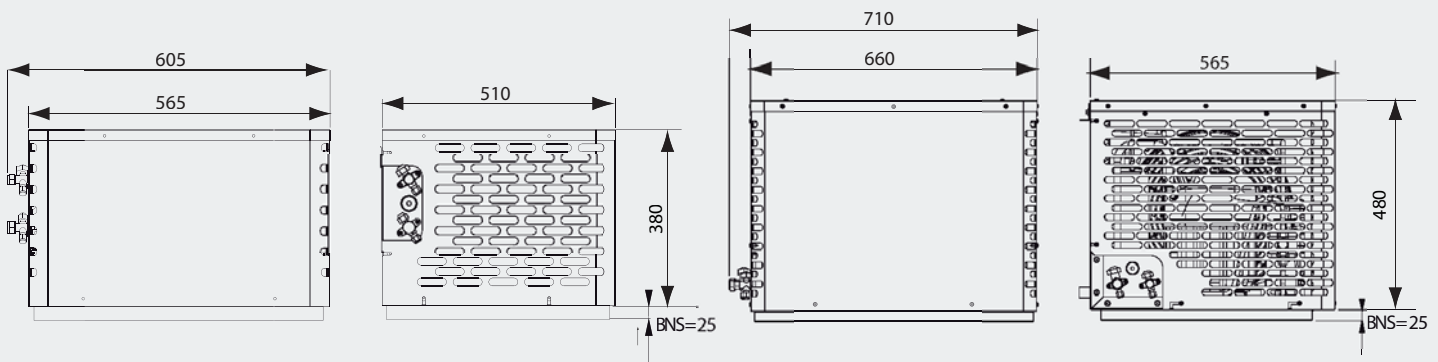
The compressor is equipped with a **RC** regulated crankcase heater to ensure its protection when the split is working in heating mode. The electrical connection is made on a sealed electrical box. The condensing units are pre-loaded with refrigerant.

The units are supplied with anti-vibration mounts and a wall bracket. The acoustic insulation of the group can be reinforced with a **BNS** kit (see splits prices).



SPC 82 and 122

SPC 170 and 230



Technical characteristics

GC 82-230 units	SPC	82	122	170	230
Cooling capacity	W	1550	2200	2900	3500
Voltage	50Hz	230 V/1+T	230 V/1+T	230 V/1+T	230 V/1+T
Intensity absorbed	A	4.6	6	8	10
Air flow	m3/h	1130	980	1700	1700
Sound pressure level at 5m without BNS	db	44	44	51	51
Sound pressure level at 5m with BNS	db	41	41	48	48
Suction gas connection (Flare)	Φ	3/8"	1/2"	5/8"	5/8"
Liquid gas connection (Flare)	Φ	1/4"	1/4"	3/8"	3/8"
Net weight	Kg	54	57	63	63
Body color		RAL7035	RAL7035	RAL7035	RAL7035
Refrigerant		R452A	R452A	R452A	R452A
Pre-loaded for	m	6	6	6	6

The water-cooled condensing units W 30 to 230

The size 30 to 230 water-cooled splits are equipped with **W** units.

The **W** units consist of a galvanized sheet metal frame and a body coated with light gray EPOXY paint (RAL7035). They have to be installed inside a nonfreezing environment. They are not insulated and should not be placed in the cellar.

They are equipped with a liquid line with dehydrator and sight glass. Flare valves are provided for the refrigeration connection. The safety of the unit is ensured by high and low pressure switches with **HBP** cartridge. The condensation pressure is regulated by a **VEP** pressostatic water valve to be adjusted when the device is commissioned. It ensures the proper functioning of the refrigeration system in summer and winter.

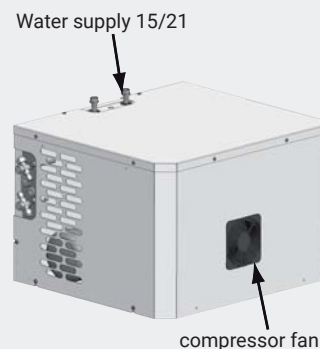
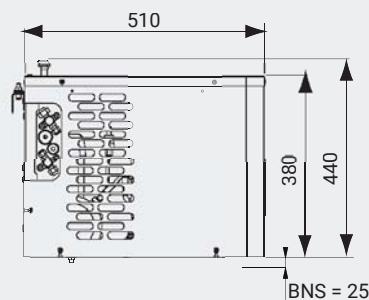
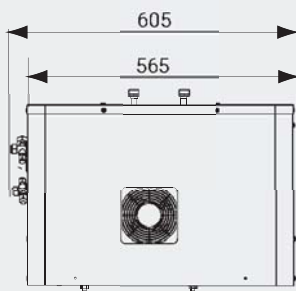


The electrical connection is made on a sealed electrical box. The condensing units are pre-loaded with refrigerant.

The units are supplied with anti-vibration mounts and a wall bracket. The sound insulation of the group can be reinforced with a **BNS** kit (see splits prices).



SPC 30 to 230



Water units must be installed in a room above 0 °C.

Technical characteristics

W 30 - 230 units	SPC	30	48	82	122	170	230
Cooling capacity	W	780	1100	1550	2200	2900	3500
Voltage	50Hz	230 V/1+T	230 V/1+T	230 V/1+T	230 V/1+T	230 V/1+T	230 V/1+T
Intensity absorbed	A	2.4	3.3	3.7	4.6	6.4	8.20
Power absorbed	W	384	527	785	961	1277	1797
Sound pressure level at 5m unit W	db	37	40	40	40	47	47
Suction gas connection (Flare)	Φ	3/8"	3/8"	3/8"	1/2"	5/8"	5/8"
Liquid gas connection (Flare)	Φ	1/4"	1/4"	1/4"	1/4"	3/8"	3/8"
Water connection on W	Φ	2 x 1/2" M	2 x 1/2" M	2 x 1/2" M	2 x 1/2" M	2 x 1/2" M	2 x 1/2" M
Net weight	Kg	36	38	54	57	63	63
Body color		RAL7035	RAL7035	RAL7035	RAL7035	RAL7035	RAL7035
Refrigerant		R134A	R134A	R452A	R452A	R452A	R452A
Pre-loaded for	m	6	6	6	6	6	6

WALL MOUNTED EVX

The evaporators of the EVX splits are positioned against the wall of the cellar. The regulation controller is integrated inside the evaporator to allow a direct connection of the unit without going through a connection box.

The design and the bronze color of the evaporator allows to perfectly fit into wooden storage units.

Genesis Finish

This is the ideal solution for cellars that are too hot. Air conditioning brings the atmosphere back to the optimum storage temperature. For rooms that are neither too humid nor too dry, the humidity is stabilized in the correct range using the Cold Water Recycling (CWR) process.

Vintage Finish

This is the all-inclusive solution. On the **EVX** range it insures the air conditioning, heating and humidification of the cellar. Optimized for cellars that are too dry, these models are equipped with the **HGR%** system. It allows humidity to be raised without adding heat and does not require demineralized water or softeners. The use of a **KLPWSECU** kit will facilitate and secure the connection to water

Remote control

This is the simplest solution to take control of your cellar conditioner. With the wireless radio frequency remote control, no more distance problem, the signal passes through walls. You can control your cellar right up to your kitchen. On Vintage models, it displays temperature and humidity.

WineSupervisor

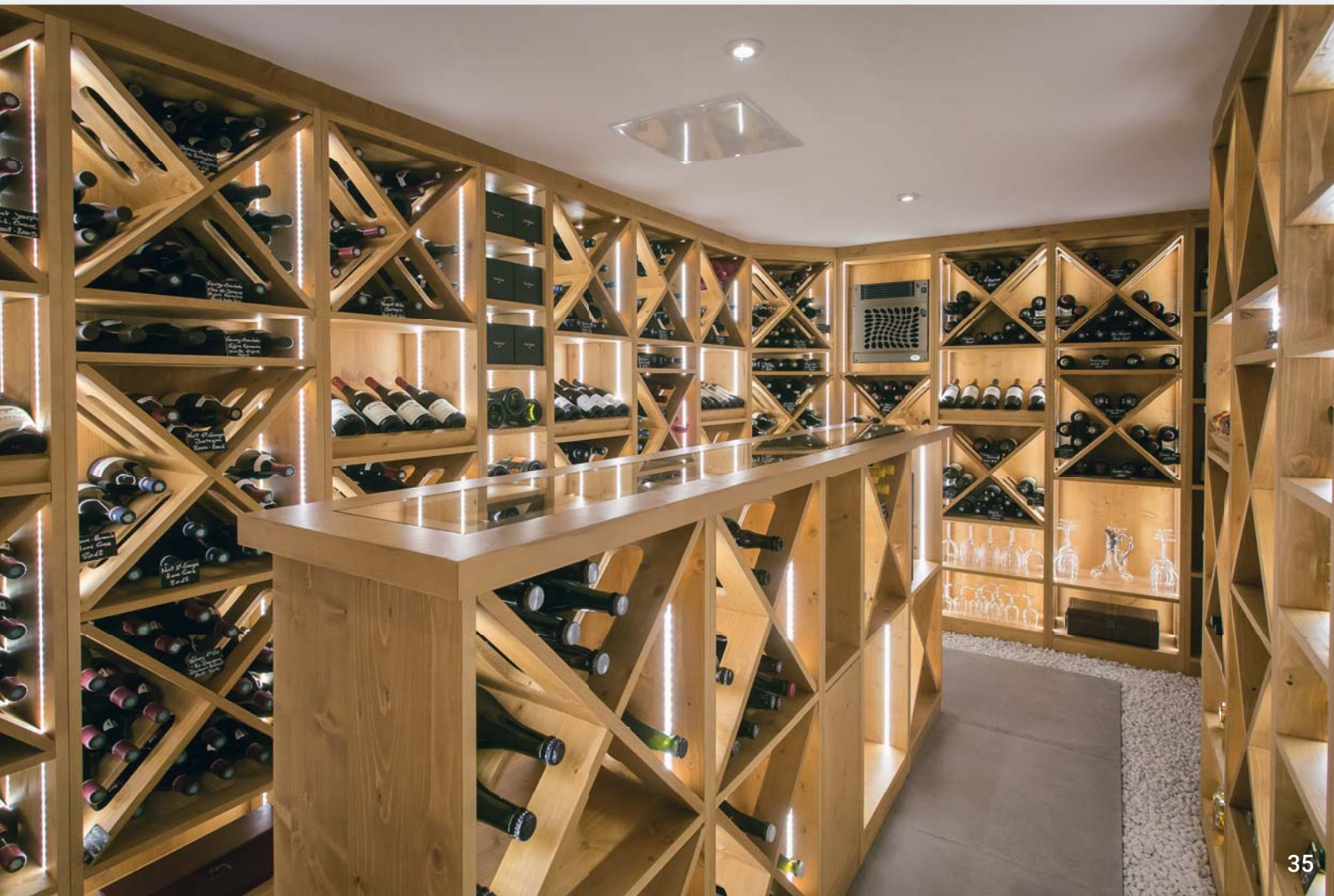
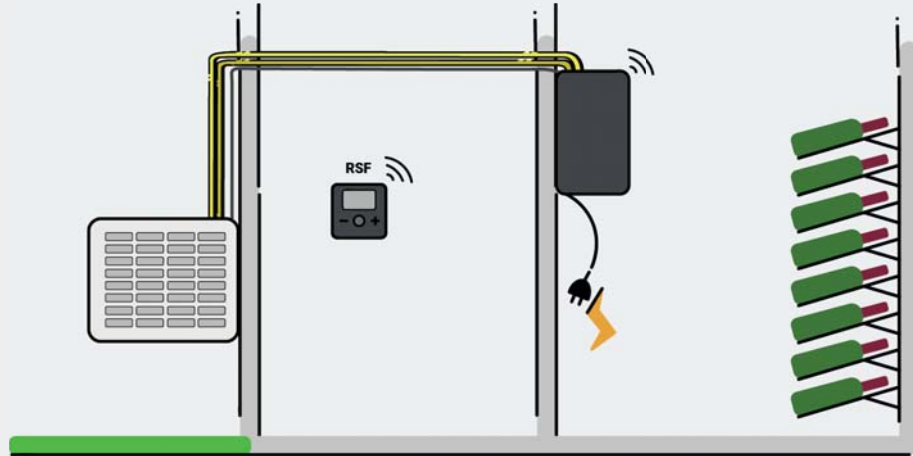
This is the connected solution. Whatever your environment, Friax offers the solution to remain constantly connected to your cellar. Using the **KWSP-I** kit, you connect to the supervision of your home through a Modbus protocol. The **KWSP-III** solution brings all the cellar information directly to your tablet or smartphone.



WALL MOUNTED EVX

The wall mounted split solution

EVX evaporators blend discreetly into the cellar decor and in middle of the bottles by simply attaching to the wall.



WALL MOUNTED EVX - Description

Genesis Evaporator

Cooling only

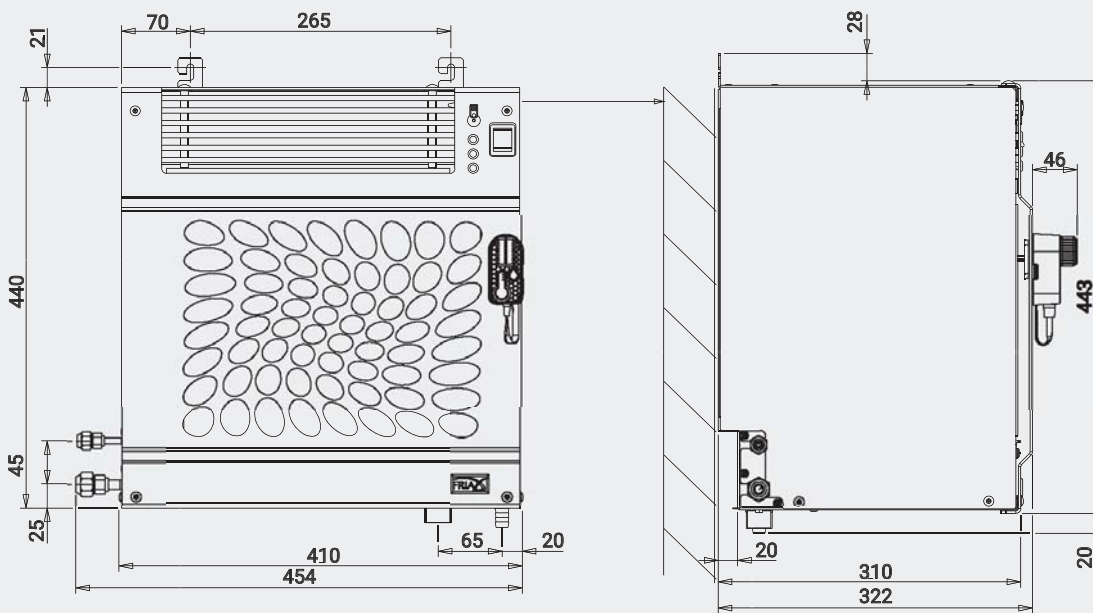
- Wall mounting in the cellar
- Black epoxy paint body
- Aluminum fronts bronze color
- Flare refrigeration connection outside
- Stainless steel thermostatic expansion valve
- **CWR** (Cold water recycling)
- Front panel operation and alarm indicators
- Power switch
- Integrated electrical box
- Variable speed EC ventilation
- **RSF** wireless remote control
- Display of the temperature and the various functions of the device
- Nitrogen pressurized

Vintage Evaporator

Cooling – Heating - Humidification

- Wall mounting in the cellar
- Black epoxy paint body
- Aluminum fronts bronze color
- Flare refrigeration connection outside
- Stainless steel thermostatic expansion valve
- **CWR** (Cold water recycling)
- Front panel operation and alarm indicators
- Power switch
- Integrated electrical box
- Variable speed EC ventilation
- **RSF** wireless remote control
- Display of the temperature and the various functions of the device
- **KCH** integrated heating
- **KHGR%** integrated humidifier
- Nitrogen pressurized

EVX evaporator dimensions



WALL MOUNTED EVX

Technical characteristics			
Wall Mounted EVX	SPC	30	48
Cooling capacity 12°C / 32°C ext.	W	780	1100
Heating capacity on Vintage	W	800	800
EVX evaporator characteristics	SPC	30	48
Voltage	50Hz	230 V / 1+T	230 V / 1+T
Cooling Intensity absorbed	A max	0.8	0.8
Heating Intensity absorbed	A max	4.3	4.3
Fan	Quantity	1	1
Air flow	mh/3	225	335
Suction gas connection (Flare)	Φ	3/8"	3/8"
Liquid gas connection (Flare)	Φ	1/4"	1/4"
Net weight	kg	17	18
Body color		Black/Bronze	Black/Bronze
Refrigerant		R134A	R134A
Water condensing unit	Type	GCG30	GCG48
Air condensing unit	Type	W30	W48
PRICES - Air condensing wall mounted EVX			
GENESIS	Product code	SPC30 EVX GN	SPC48 EVX GN
VINTAGE	Product code	SPC30 EVX VT	SPC48 EVX VT
PRICES - Water condensing wall mounted EVX			
GENESIS	Product code	SPC30 WEVX GN	SPC48 WEVX GN
VINTAGE	Product code	SPC30 WEVX VT	SPC48 WEVX VT

Accessories

Code	Description	Infos	Compatibility	
			Genesis	Vintage
KLPWSECU	Secure connection kit for humidifier	p53		X
KLPR20	20m extension kit for humidifier	p53		X
KPR	Lift pump	p53	X	X
BNS 30-48	Low Sound Level Kit for SPC 30 to 48	p53	X	X
KFG-GCG	Ductable front kit for GCG group	p54	X	X
KWSP-I	WineSupervisor I Kit - Modbus version	p55	X	X
KWSP-III	WineSupervisor III Kit - Connected version	p55	X	X

Quick selection



WARNING

The selections are only indicative and cannot replace a thermal balance that will consider all the parameters related to the cellar.

CEILING MOUNTED EVPL

SPLITS SYSTEM



EVPL 48
+ kit KPM

The evaporators of the EVPL splits are positioned horizontally on the ceiling to blow on the whole length of the cellar. This position has the advantage of maximizing the space for bottles on the walls.

The design and dark color facilitate the integration into any cellar configuration.

When necessary the **KPM** kits allow the EVPL 30 to 122 to be installed vertically on a wall.

Genesis Finish



This is the ideal solution for cellars that are too hot. Air conditioning brings the atmosphere back to the optimum storage temperature. For rooms that are neither too humid nor too dry, the humidity is stabilized in the correct range using the Cold Water Recycling (**CWR**) process.

Vintage Finish



This is the all-inclusive solution. On the **EVPL** range it insures the air conditioning, heating and humidification of the cellar. Optimized for cellars that are too dry, these models are equipped with the **HGR%** system. It allows humidity to be raised without adding heat and does not require demineralized water or softeners. The use of a **KLPWSECU** kit will facilitate and secure the connection to water.

Remote control



This is the simplest solution to take control of your cellar conditioner. With the wireless radio frequency remote control, no more distance problem, the signal passes through walls. You can control your cellar right up to your kitchen. On Vintage models, it displays temperature and humidity.



WineSupervisor



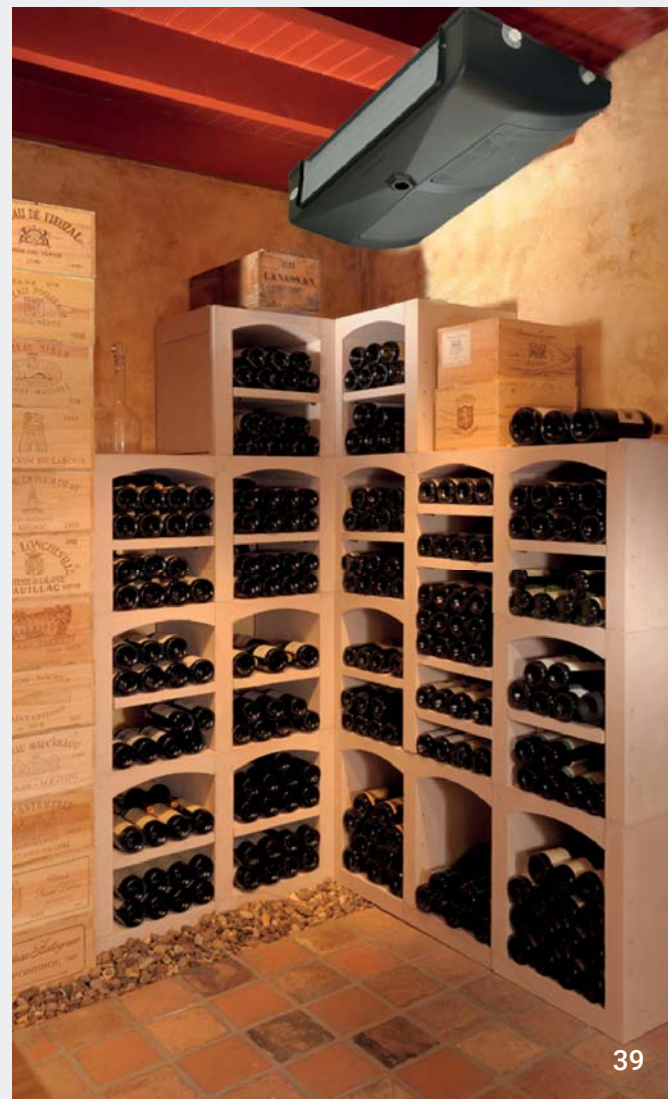
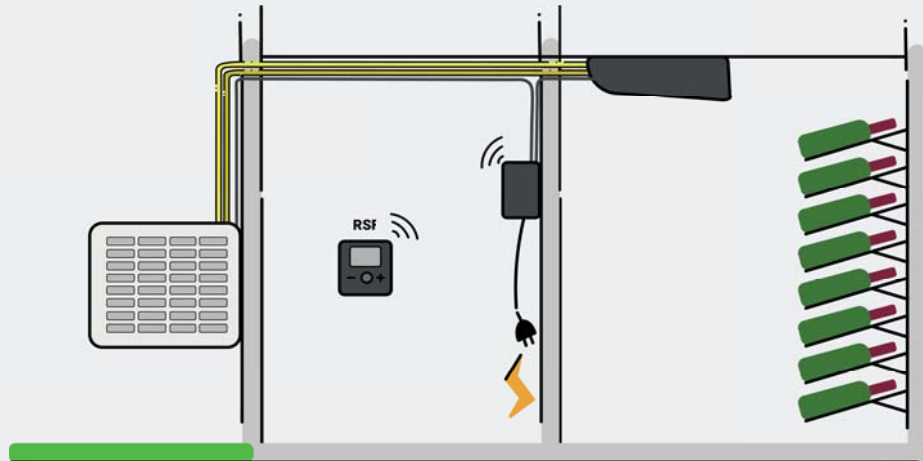
This is the connected solution. Whatever your environment, Friax offers the solution to remain constantly connected to your cellar. Using the **KWSP-I** kit, you connect to the supervision of your home through a Modbus protocol. The **KWSP-III** solution brings all the cellar information directly to your tablet or smartphone.



CEILING MOUNTED EVPL

The ceiling mounted split solution

EVPL evaporators are easily integrated into the ceiling of any cellar. The wide power range of the devices makes it possible to air-condition large volumes without ever compromising user comfort.



CEILING MOUNTED EVPL - Description

Genesis Evaporator

Cooling only

- Ceiling installation in the cellar
- Glossy aluminum body for models 30 and 48 and recyclable ABS for models 82 to 230
- RAL color 7024
- Flare refrigeration connection
- Stainless steel thermostatic expansion valve
- **CWR** (Cold water recycling)
- ABS connection box
- **RSF** wireless remote control
- Display of the temperature and the various functions of the device
- **PDO** Pump Down solenoid valve on models 170 and 230
- Nitrogen pressurized

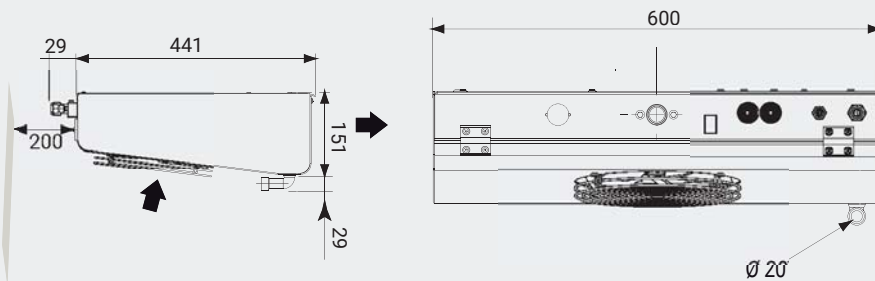
Vintage Evaporator

Cooling – Heating - Humidification

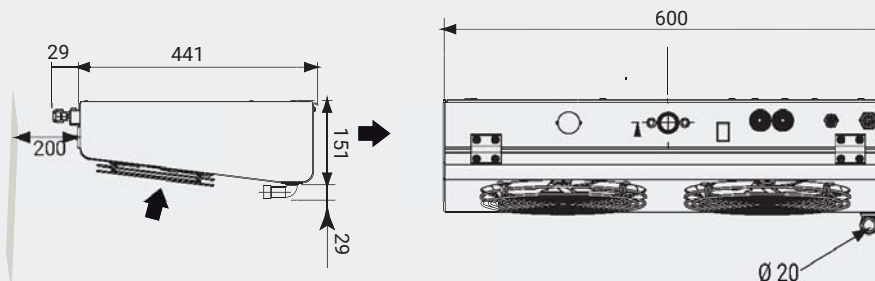
- Ceiling installation in the cellar
- Glossy aluminum body for models 30 and 48 and recyclable ABS for models 82 to 230
- Flare refrigeration connection
- Stainless steel thermostatic expansion valve
- **CWR** (Cold water recycling)
- ABS connection box
- **RSF** wireless remote control
- Display of temperature, humidity and various functions of the device
- **PDO** Pump Down solenoid valve on models 170 and 230
- **KCH** integrated heating
- **KHGR%** integrated humidifier
- Nitrogen pressurized

EVPL evaporator dimensions

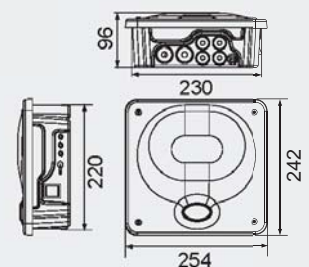
SPC 30



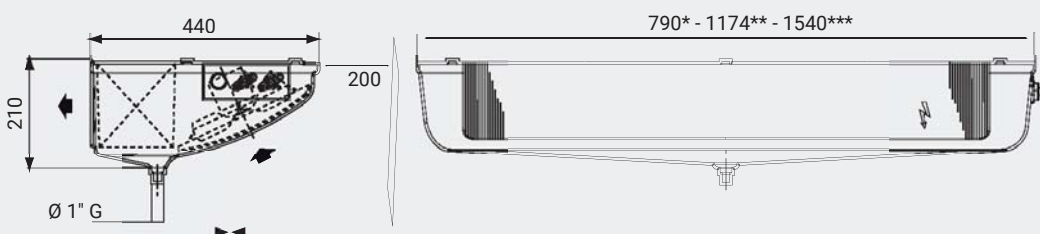
SPC 48



Connection box



SPC 82* - 122* - 170** - 230***



Ceiling Mounted EVPL

Technical characteristics

Ceiling Mounted EVPL	SPC	30	48	82	122	170	230
Cooling capacity 12°C / 32°C ext.	W	780	1100	1550	2200	2900	3500
Heating capacity on Vintage	W	850	850	850	1000	1600	2000
EVPL evaporator characteristics	SPC	30	48	82	122	170	230
Voltage	50Hz	230 V/1+T	230 V/1+T	230 V/1+T	230 V/1+T	230 V/1+T	230 V/1+T
Cooling Intensity absorbed	A max	0.3	0.6	0.6	0.6	1	1.2
Heating Intensity absorbed	A max	3.9	4.1	4.3	5	8	10
Ventilateur	Nombre	1 x 200	2 x 200	2 x 200	2 x 200	3 x 200	4 x 200
Air flow	m3/h	280	590	650	580	870	1160
Suction gas connection (Flare)	Φ	3/8"	3/8"	3/8"	1/2"	5/8"	5/8"
Liquid gas connection (Flare)	Φ	1/4"	1/4"	1/4"	1/4"	3/8"	3/8"
Net weight	Kg	11.5	13	12.5	13.5	18	23
Body color		Anthracite	Anthracite	Anthracite	Anthracite	Anthracite	Anthracite
Refrigerant		R134A	R134A	R452A	R452A	R452A	R452A
Air condensing unit	Type	GCG30	GCG48	GC82	GC122	GC170	GC230
Water condensing unit	Type	W30	W48	W82	W122	W170	W230

PRICES - Air condensing ceiling mounted EVPL

GENESIS	Product code	SPC30 EVPL GN	SPC48 EVPL GN	SPC82 EVPL GN	SPC122 EVPL GN	SPC170 EVPL GN	SPC230 EVPL GN
----------------	--------------	----------------------	----------------------	----------------------	-----------------------	-----------------------	-----------------------

VINTAGE	Product code	SPC30 EVPL VT	SPC48 EVPL VT	SPC82 EVPL VT	SPC122 EVPL VT	SPC170 EVPL VT	SPC230 EVPL VT
----------------	--------------	----------------------	----------------------	----------------------	-----------------------	-----------------------	-----------------------

PRICES - Water condensing ceiling mounted EVPL

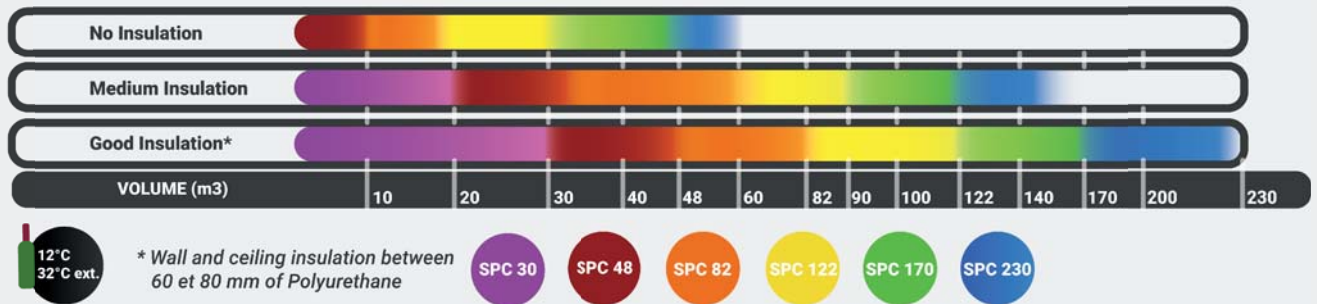
GENESIS	Product code	SPC30 WEVPL GN	SPC48 WEVPL GN	SPC82 WEVPL GN	SPC122 WEVPL GN	SPC170 WEVPL GN	SPC230 WEVPL GN
----------------	--------------	-----------------------	-----------------------	-----------------------	------------------------	------------------------	------------------------

VINTAGE	Code article	SPC30 WEVPL VT	SPC48 EVPL VT	SPC82 WEVPL VT	SPC122 WEVPL VT	SPC170 WEVPL VT	SPC230 WEVPL VT
----------------	--------------	-----------------------	----------------------	-----------------------	------------------------	------------------------	------------------------

Accessories

Code	Description	Infos	Compatibility	
			Genesis	Vintage
KLPWSECU	Secure connection kit for humidifier	p53		X
KLPR20	20m extension kit for humidifier	p53		X
KPR	Lift pump	p53	X	X
KPM2V	Wall mounting kit for 30 to 48 evaporators	p54	X	X
KPM82-122	Wall mounting kit for 82 to 122 evaporators	p54	X	X
BNS 30-48	Low Sound Level Kit for SPC 30 to 48	p53	X	X
BNS 82-122	Low Sound Level Kit for SPC 82 to 122	p53	X	X
BNS 170-230	Low Sound Level Kit for SPC 170 to 230	p53	X	X
KFG-GCG	Ductable front kit for GCG group	p54	X	X
KWSP-I	WineSupervisor I Kit - Modbus version	p55	X	X
KWSP-III	WineSupervisor III Kit - Connected version	p55	X	X

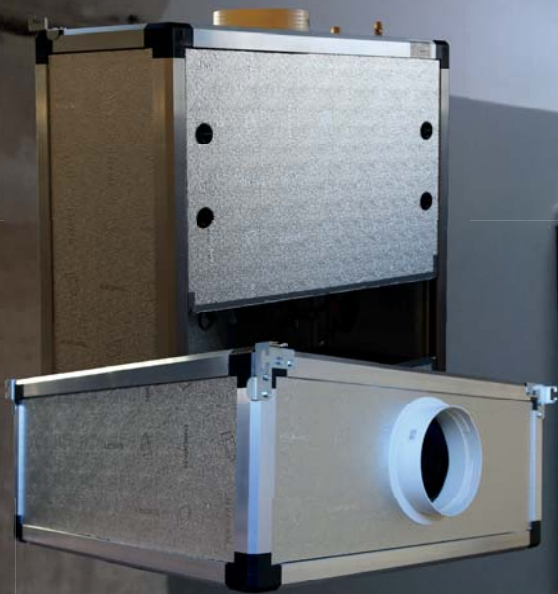
Quick selection



* Wall and ceiling insulation between 60 et 80 mm of Polyurethane

WARNING

The selections are only indicative and cannot replace a thermal balance that will consider all the parameters related to the cellar.

DUCTABLE EVG/EVI**A discreet solution that wanni-sh from your sight ...**

The evaporators of the EVG ducted ceiling splits and EVI consoles are easily integrated inside or outside of spaces where aesthetics is privileged.

This type of invisible and silent air conditioner will provide additional comfort in the cellar thanks to its indoor unit designed to be installed with a duct network. The variety of dimensions and the many layout possibilities facilitate their integration into spaces of different styles.

Genesis Finish

This is the ideal solution for cellars that are too hot. Air conditioning brings the atmosphere back to the optimum storage temperature. For rooms that are neither too humid nor too dry, the humidity is stabilized in the correct range using the Cold Water Recycling (**CWR**) process.

Vintage Finish

This is the all-inclusive solution. On the **EVG** and **EVI** it insures the air conditioning, heating and humidification of the cellar. Optimized for cellars that are too dry, these models are equipped with the **HGR%** system. It allows humidity to be raised without adding heat and does not require demineralized water or softeners. The use of a **KLPWSECU** kit will facilitate and secure the connection to water.

Remote control

This is the simplest solution to take control of your cellar conditioner. With the wireless radio frequency remote control, no more distance problem, the signal passes through walls. You can control your cellar right up to your kitchen. On Vintage models, it displays temperature and humidity.

**WineSupervisor**

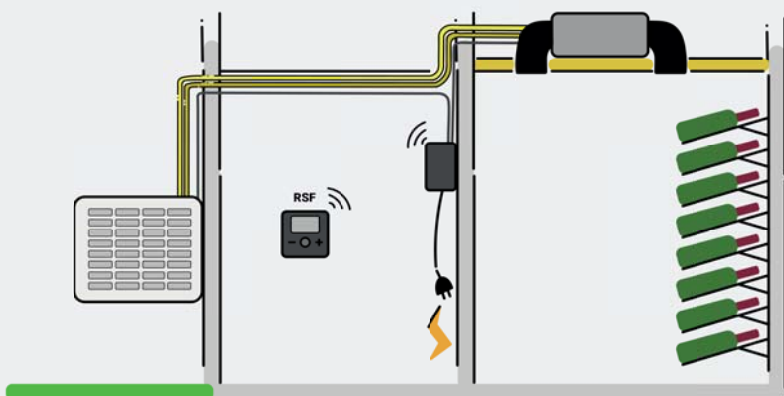
This is the connected solution. Whatever your environment, Friax offers the solution to remain constantly connected to your cellar. Using the **KWSP-I** kit, you connect to the supervision of your home through a Modbus protocol. The **KWSP-III** solution brings all the cellar information directly to your tablet or smartphone.



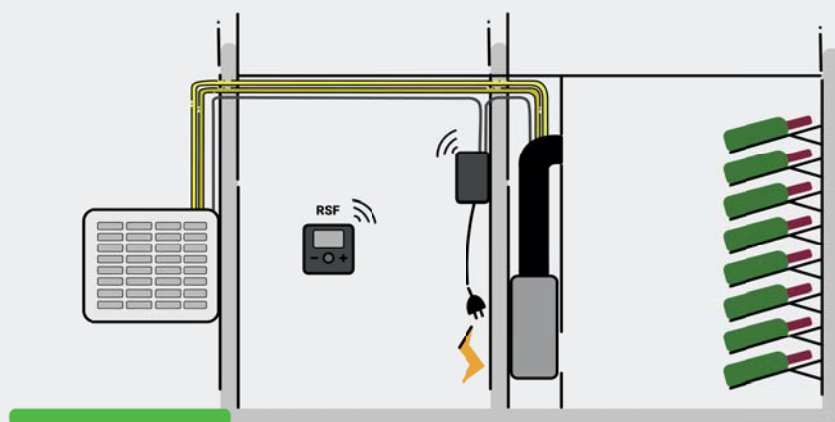
DUCTABLE EVG/EVI - Installation possibilities

EVG and EVI evaporators are invisible and quiet! The diversity of the range allows for air-conditioning large volumes without ever compromising the user comfort.

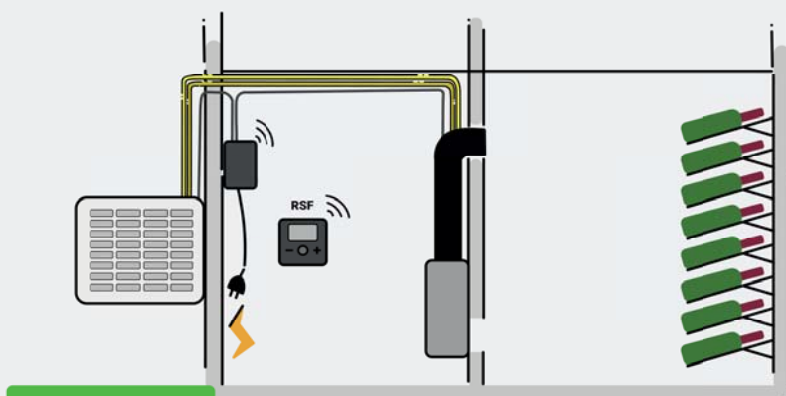
EVG



EVI-IN (specify position when ordering)



EVI-OUT (specify position when ordering)



DUCTABLE EVG/EVI - Description

Genesis Evaporator

Cooling only

- Aluminum frame with thermal break
- Aluminized polyurethane panels
- Stainless steel thermostatic expansion valve
- **CWR** (Cold water recycling)
- Variable speed ventilation
- **RSF** wireless remote control
- Display of temperature and different device functions
- Nitrogen pressurized

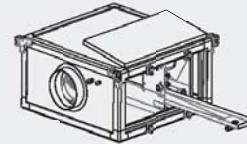
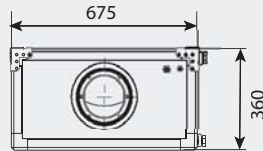
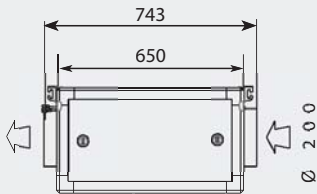
Vintage Evaporator

Cooling – Heating – Humidification

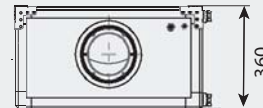
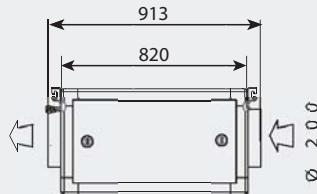
- Aluminum frame with thermal break
- Aluminized polyurethane panels
- Stainless steel thermostatic expansion valve
- **CWR** (Cold water recycling)
- Variable speed ventilation
- **RSF** wireless remote control
- Display of temperature, humidity and various functions of the device
- **KCH** integrated heating
- **KHGR%** integrated humidifier
- Nitrogen pressurized

EVG evaporator dimensions

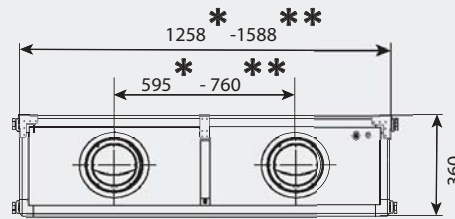
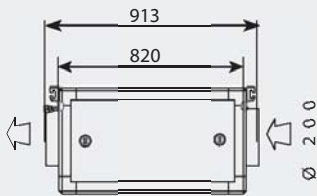
SPC 30 - 48 EVG



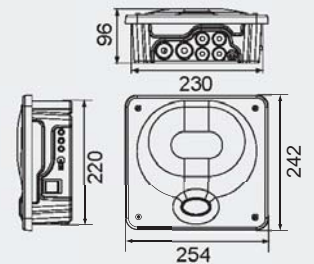
SPC 82 - 122 EVG



SPC 170* - 230** EVG

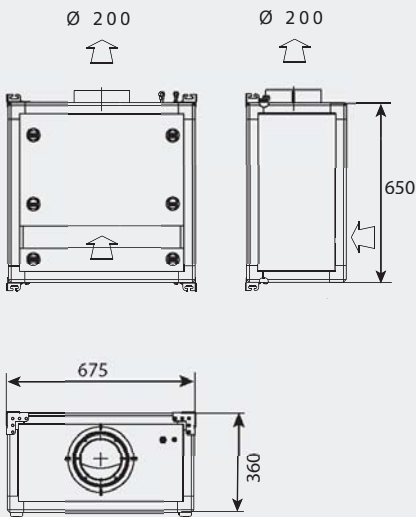


Connection box

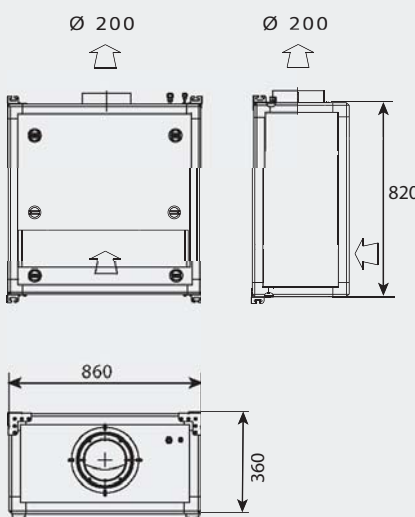


Dimensions of EVI evaporators

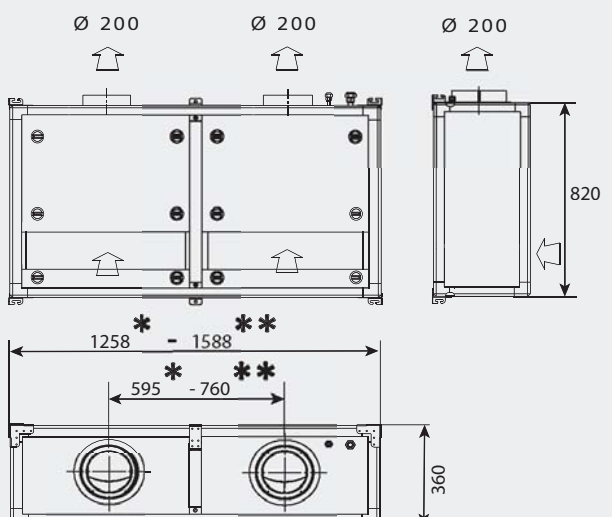
SPC 30 - 48 EVI



SPC 82 - 122 EVI



SPC 170* - 230** EVI



DUCTABLE EVG/EVI

Technical characteristics

Ductable EVG/EVI	SPC	30	48	82	122	170	230
Cooling capacity 12°C / 32°C ext.	W	780	1100	1550	2200	2900	3500
Heating capacity on Vintage	W	800	800	850	1000	1600	2000
EVG/EVI evaporator characteristics	SPC	30	48	82	122	170	230
Tension	50Hz	230 V/1+T	230 V/1+T	230 V/1+T	230 V/1+T	230 V/1+T	230 V/1+T
Cooling Intensity absorbed	A max	1.4	1.4	1.4	1.4	2.9	2.9
Intensité absorbée chaud	A max	4.9	4.9	5.1	5.8	10	11.7
Fan	Nombre	1	1	1	1	2	2
Débit d'air	m3/h	260	350	650	580	870	1100
Suction gas connection (Flare)	Φ	3/8"	3/8"	3/8"	1/2"	5/8"	5/8"
Liquid gas connection (Flare)	Φ	1/4"	1/4"	1/4"	1/4"	3/8"	3/8"
Net weight	Kg	26	26	32	36	48	56
Body color		Aluminum	Aluminum	Aluminum	Aluminum	Aluminum	Aluminum
Refrigerant		R134A	R134A	R452A	R452A	R452A	R452A
Air condensing unit	Type	GCG30	GCG48	GC82	GC122	GC170	GC230
Water condensing unit	Type	W30	W48	W82	W122	W170	W230

PRICES - Horizontal Evaporator EVG - Air Condensing

GENESIS	Product code	SPC30 EVG GN	SPC48 EVG GN	SPC82 EVG GN	SPC122 EVG GN	SPC170 EVG GN	SPC230 EVG GN
VINTAGE	Product code	SPC30 EVG VT	SPC48 EVG VT	SPC82 EVG VT	SPC122 EVG VT	SPC170 EVG VT	SPC230 EVG VT

PRICES - Vertical Evaporateur EVI - Air Condensing

GENESIS	Product code	SPC30 EVI GN	SPC48 EVI GN	SPC82 EVI GN	SPC122 EVI GN	SPC170 EVI GN	SPC230 EVI GN
VINTAGE	Product code	SPC30 EVI VT	SPC48 EVI VT	SPC82 EVI VT	SPC122 EVI VT	SPC170 EVI VT	SPC230 EVI VT

PRICES - Horizontal Evaporator EVG - Water Condensing

GENESIS	Product code	SPC30 WEVG GN	SPC48 WEVG GN	SPC82 WEVG GN	SPC122 WEVG GN	SPC170 WEVG GN	SPC230 WEVG GN
VINTAGE	Product code	SPC30 WEVG VT	SPC48 WEVG VT	SPC82 WEVG VT	SPC122 WEVG VT	SPC170 WEVG VT	SPC230 WEVG VT

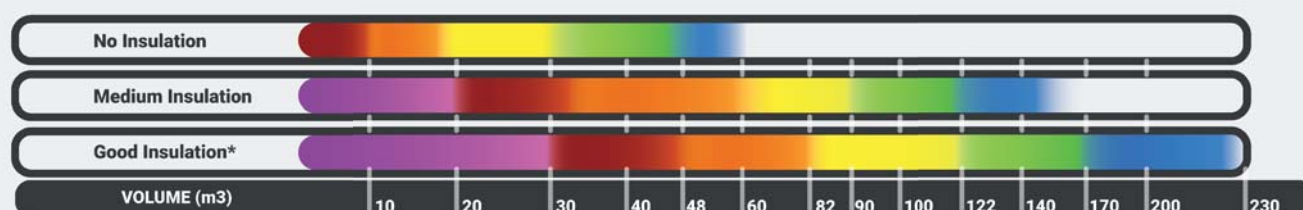
PRICES - Vertical Evaporateur EVI - Water Condensing

GENESIS	Product code	SPC30 WEVI GN	SPC48 WEVI GN	SPC82 WEVI GN	SPC122 WEVI GN	SPC170 WEVI GN	SPC230 WEVI GN
VINTAGE	Product code	SPC30 WEVI VT	SPC48 WEVI VT	SPC82 WEVI VT	SPC122 WEVI VT	SPC170 WEVI VT	SPC1230 WEVI VT

Accessories

Code	Description	Infos	Compatibility	
			Genesis	Vintage
KLPWSECU	Secure connection kit for humidifier	p53		X
KLPR20	20m extension kit for humidifier	p53		X
KPR	Lift pump	p53	X	X
BNS 30-48	Low Sound Level Kit for SPC 30 to 48	p53	X	X
BNS 82-122	Kit Bas Niveau Sonore pour SPC 82 à 122	p53	X	X
BNS 170-230	Low Sound Level Kit for SPC 170 to 230	p53	X	X
KFG-GCG	Ductable front kit for GCG group	p54	X	X
KWSP-I	WineSupervisor I Kit - Modbus version	p55	X	X
KWSP-III	WineSupervisor III Kit - Connected version	p55	X	X

Quick selection

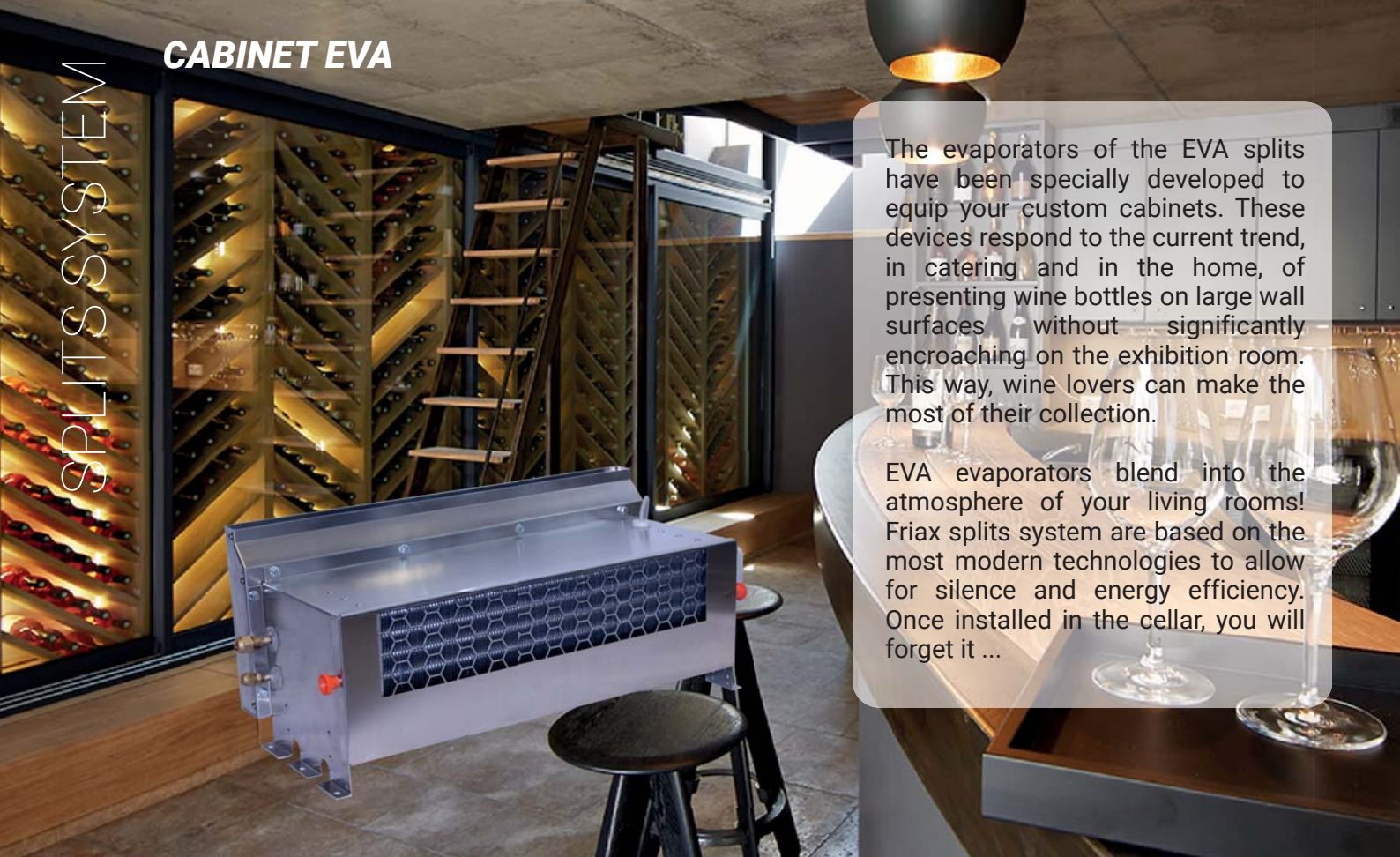


* Wall and ceiling insulation between 60 et 80 mm of Polyurethane



WARNING

The selections are only indicative and cannot replace a thermal balance that will consider all the parameters related to the cellar.



The evaporators of the EVA splits have been specially developed to equip your custom cabinets. These devices respond to the current trend, in catering and in the home, of presenting wine bottles on large wall surfaces without significantly encroaching on the exhibition room. This way, wine lovers can make the most of their collection.

EVA evaporators blend into the atmosphere of your living rooms! Friax splits system are based on the most modern technologies to allow for silence and energy efficiency. Once installed in the cellar, you will forget it ...

Genesis Finish



This is the ideal solution for cellars that are too hot. Air conditioning brings the atmosphere back to the optimum storage temperature. For rooms that are neither too humid nor too dry, the humidity is stabilized in the correct range using the Cold Water Recycling (CWR) process.

Vintage Finish



This is the all-inclusive solution. On the **EVA** range it insures the air conditioning and humidification of the cellar or wine cabinet. Optimized for cellars that are too dry, these models are equipped with the **HGR%** system. It allows humidity to be raised without adding heat and does not require demineralized water or softeners. The use of a **KLPWSECU** kit will facilitate and secure the connection to water.

Remote control



This is the simplest solution to take control of your cellar conditioner. With the wireless radio frequency remote control, no more distance problem, the signal passes through walls. You can control your cellar right up to your kitchen. On Vintage models, it displays temperature and humidity.



WineSupervisor



This is the connected solution. Whatever your environment, Friax offers the solution to remain constantly connected to your cellar. Using the **KWSP-I** kit, you connect to the supervision of your home through a Modbus protocol. The **KWSP-III** solution brings all the cellar information directly to your tablet or smartphone.



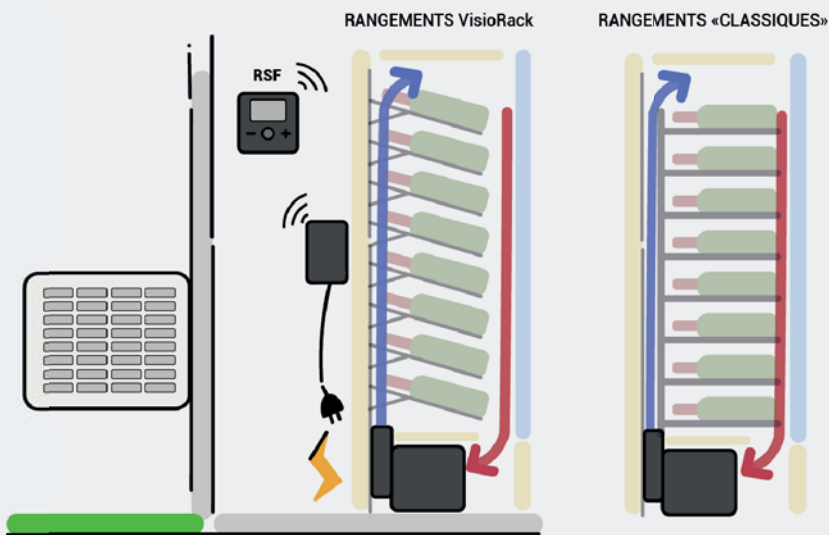
ARMOIRE EVA

These devices have been developed to fit best into smaller spaces: be creative, the EVA will fit into all your cabinet and display projects.

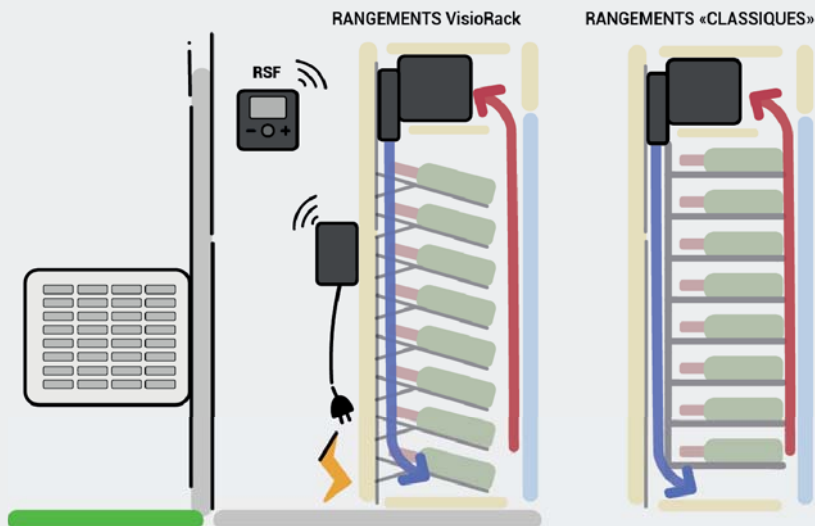
The very compact, aluminum-cased EVA evaporator is designed to fit into furniture with a minimum depth of 350 mm. It is equipped with an EC fan, which makes it possible to adjust the flow rate to the pressure drop of the cabinet in which it is installed directly with the remote control. The retractable diffuser turns 180° depending on whether the device is positioned as a plinth or cornice in the wine cabinet. Very narrow, it allows double bottom blowing in a cabinet. The condensate tray is mounted on slides to facilitate cleaning during maintenance operations.

Installation possibilities

Air blowing up



Air blowing down



CABINET EVA - Description

Genesis Evaporator Cooling only

- Aluminum body
- Flare refrigeration connection outside
- Removable condensate tray
- Stainless steel thermostatic expansion valve
- **CWR** (Cold water recycling) stabilization of humidity
- Variable speed EC ventilation
- **RSF** wireless remote control
- Display of the temperature and the various functions of the device
- High or low adjustable diffuser
- Nitrogen pressurized

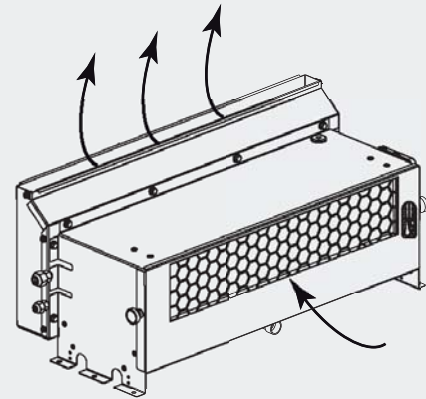
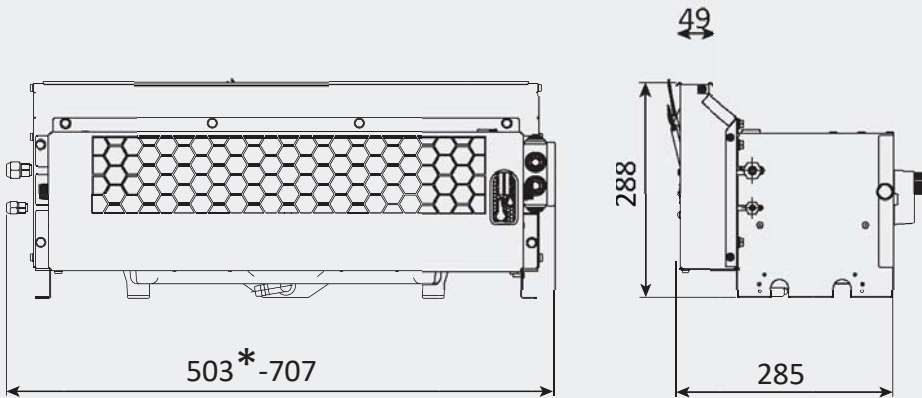
Vintage Evaporator Cooling – Heating – Humidification

- Aluminum body
- Flare refrigeration connection outside
- Removable condensate tray
- Stainless steel thermostatic expansion valve
- **CWR** (Cold water recycling) stabilization of humidity
- Variable speed EC ventilation
- **RSF** wireless remote control
- Display of temperature, humidity and various functions of the device
- High or low adjustable diffuser
- **KHGR%** integrated humidifier
- Nitrogen pressurized

Dimensions of EVA evaporators

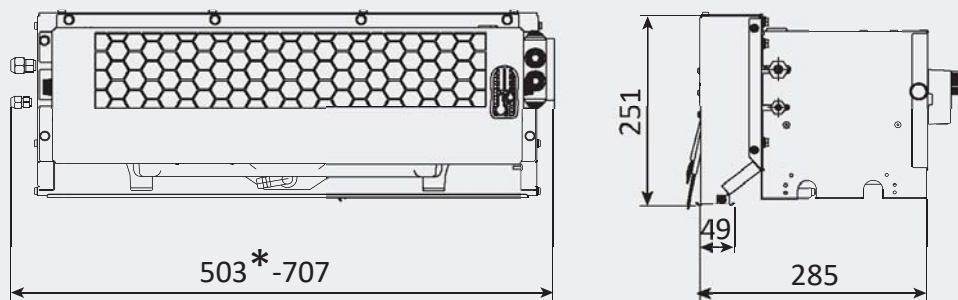
Upward blowing evaporators

SPC 30 - 48 - 82* - 122

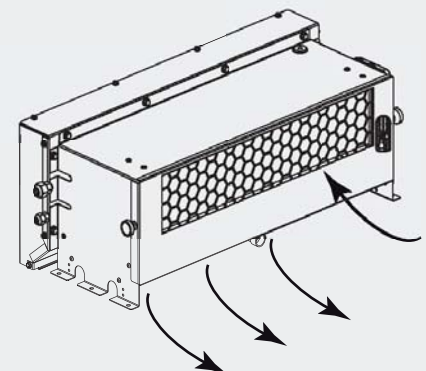
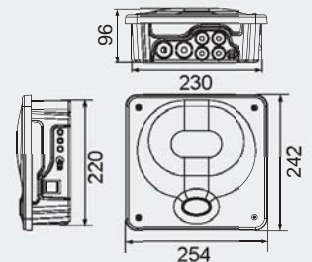


Downward blowing evaporators

SPC 30 - 48 - 82* - 122



Connection box



CABINET EVA

Technical characteristics

<i>Cabinet EVA</i>	SPC	30	48	82	122	170
Cooling capacity 12°C / 32°C ext.	W	780	1100	1480	2100	2900
Heating capacity	W	-	-	-	-	-
<i>EVA evaporator characteristics</i>	SPC	30	48	82	122	170
Voltage	50Hz	230 V/1+T	230 V/1+T	230 V/1+T	230 V/1+T	230 V/1+T
Intensity absorbed	A max	0.8	0.8	1.6	1.6	1.6
Evaporator	Quantity	1	1	2	2	3
Air flow / Evaporator	m3/h	300	450	2 x 300	2 x 450	3 x 370
Suction gas connection (Flare)	Φ	3/8"	3/8"	2 x 3/8"	2 x 3/8"	3 x 3/8"
Liquid connection (Flare)	Φ	1/4"	1/4"	2 x 1/4"	2 x 1/4"	3 x 1/4"
Poids net	Kg	6	6	2 x 5	2 x 6	3 x 6
Couleur carrosserie		Aluminum	Aluminum	Aluminum	Aluminum	Aluminum
Refrigerant		R134A	R134A	R452A	R452A	R452A
Air condensing unit	Type	GCG30	CGC48	CG82	CGC122	CGC170
Water condensing unit	Type	W30	W48	W82	W122	W170

PRICES - Air Condensing Cabinet EVA

GENESIS	<i>Product code</i>	SPC30 EVA GN	SPC48 EVA GN	SPC82EVA GN	SPC122 EVA GN	SPC170 EVA GN
VINTAGE	<i>Product code</i>	SPC30 EVA VT	SPC48 EVA VT	SPC82 EVA VT	SPC122 EVA VT	SPC170 EVA VT

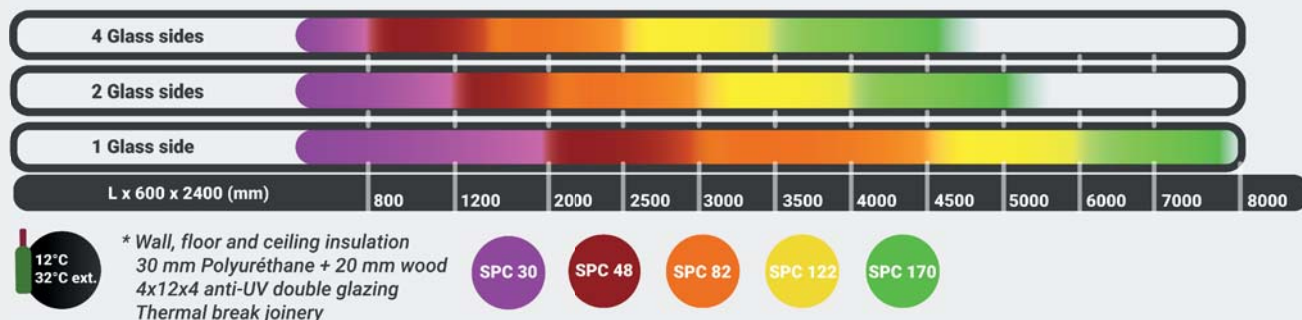
PRICES - Water Condensing Cabinet EVA

GENESIS	<i>Product code</i>	SPC30 WEVA GN	SPC48 WEVA GN	SPC82 WEVA GN	SPC122 WEVA GN	SPC170 WEVA GN
VINTAGE	<i>Product code</i>	SPC30 WEVA VT	SPC48 WEVA VT	SPC82 WEVA VT	SPC122 WEVA VT	SPC170 WEVA VT

Accessories

Code	Description	Infos	Compatibility	
			Genesis	Vintage
KLPWSECU	Secure connection kit for humidifier	p53		X
KLPR20	20m extension kit for humidifier	p53		X
KPR	Lift pump	p53	X	X
BNS 30-48	Low Sound Level Kit for SPC 30 to 48	p53	X	X
BNS 82-122	Low Sound Level Kit for SPC 82 to 122	p53	X	X
BNS 170-230	Low Sound Level Kit for SPC 170 to 230	p53	X	X
KFG-GCG	Ductable front kit for GCG group	p54	X	X
KWSP-I	WineSupervisor I Kit - Modbus version	p55	X	X
KWSP-III	WineSupervisor III Kit - Connected version	p55	X	X

Quick selection



WARNING

The selections are only indicative and cannot replace a thermal balance that will consider all the parameters related to the cellar.



YOUR RETAILER